



## M E M O R A N D U M

June 13, 2018

GPAC Members:

Please find attached the following for you to insert into Tab #8 of your GPAC binder:

1. GPAC Meeting #8 Agenda
2. GPAC Meeting #7 Meeting Minutes
3. Draft Community Services and Facilities Element

This meeting will involve a review of the Draft Community Services and Facilities Element. It will be preceded by an informal presentation about the various services and facilities that are provided by both the City of Scotts Valley and those provided by special districts. The organization chart on the following page provides a useful visual reference.

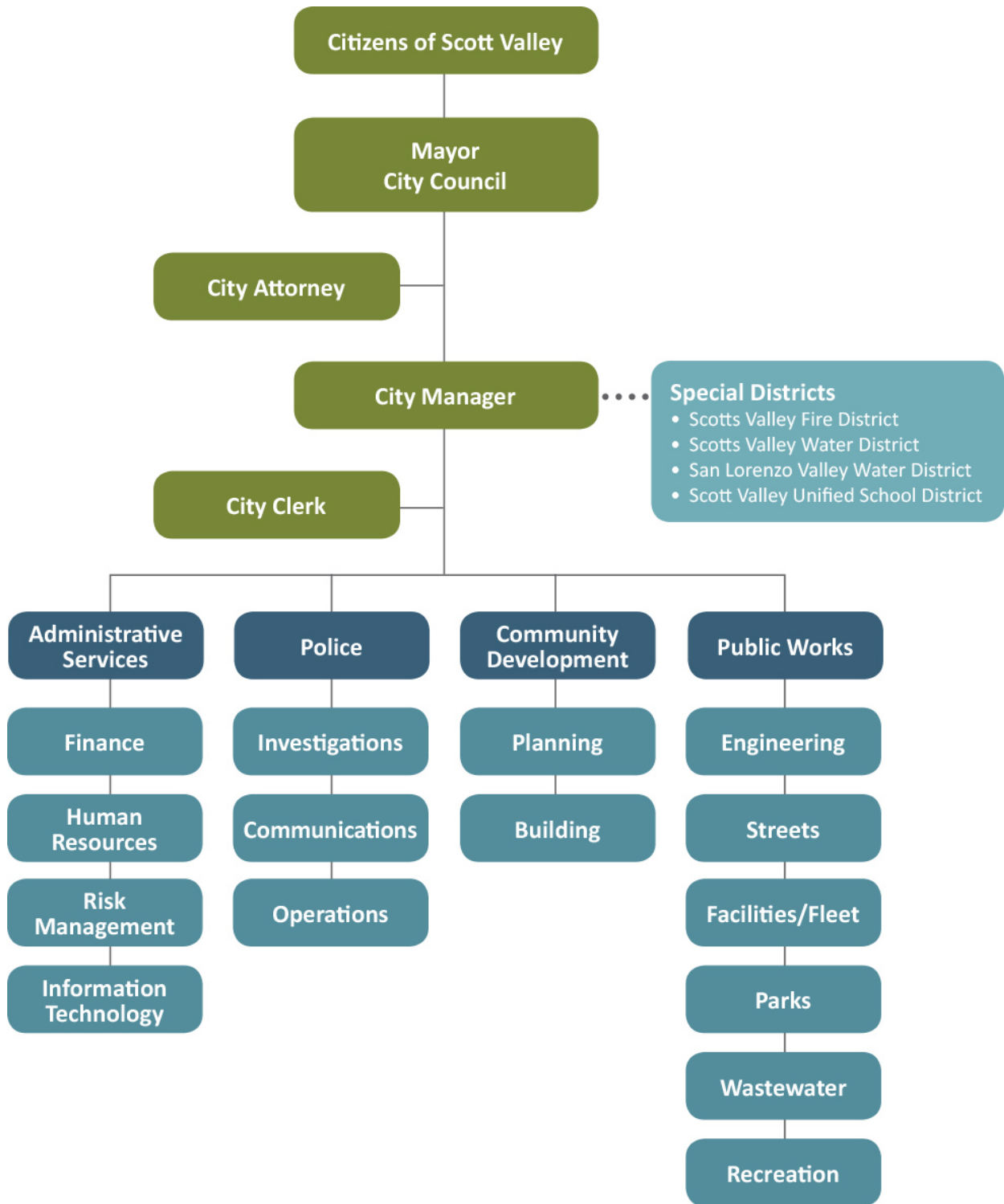
As a reminder, please be sure to reference the organization and content narrative as provided in your previous GPAC meeting packet #6.

We look forward to seeing you next Tuesday, June 19 at 6:00 PM at the Council Chambers.

Regards,

A handwritten signature in blue ink, reading "Bill Wiseman".

Kimley-Horn & Associates





# AGENDA



## Meeting of the General Plan Advisory Committee (GPAC)

**Date: June 19, 2018**

**Time: 6:00 – 8:00 PM**

<b>CITY OF SCOTTS VALLEY</b> 1 Civic Center Drive Scotts Valley, CA 95066 (831) 440-5630	<b>MEETING LOCATION</b> City Council Chambers 1 Civic Center Drive Scotts Valley, CA 95066	<b>POSTING:</b> The agenda was posted 06-19-18 at City Hall, SV Senior Center, SV Library and on the Internet at <a href="http://www.scottsvalleygeneralplan.com">www.scottsvalleygeneralplan.com</a>
---	---	--

### Elected and Appointed Officials

Jim Reed, Mayor, Scotts Valley City Council  
Randy Johnson, Scotts Valley City Council  
Derek Timm, Chair, Scotts Valley Planning Commission  
Lori Gentile, Chair, Scotts Valley Parks & Recreation Commission  
Russ Patterson, Chair, Scotts Valley Fire Protection District Board of Directors  
Michael Shulman, President, Scotts Valley Unified School District Board of Directors  
John Yost, President, Scotts Valley Chamber of Commerce Board of Directors  
Chris Perri, Vice President, Scotts Valley Water District Board of Directors  
Steven Clark, At-Large Member, Appointed by the Scotts Valley City Council  
Angela Franklin, At-Large Member, Appointed by the Scotts Valley City Council  
Ed Harmon, At-Large Member, Appointed by the Scotts Valley City Council  
Jeff Hill, At-Large Alternate Member, Appointed by the Scotts Valley City Council

### City and Support Staff Members

Taylor Bateman, Acting Community Development Director  
Michelle Edwards, Senior Planner  
Brenda Stevens, Assistant Planner  
Jenny Haruyama, City Manager  
Bill Wiseman, GPAC Consultant, Kimley-Horn

*Questions or comments about the General Plan Update may be directed to Taylor Bateman, Acting Community Development Director at 831-440-5633 or [tbateman@scottsvalley.org](mailto:tbateman@scottsvalley.org). Further information can also be found at: [www.scottsvalleygeneralplan.com](http://www.scottsvalleygeneralplan.com)*

**CALL TO ORDER:** 6:00 p.m.

**ROLL CALL**

**PUBLIC COMMENT**

This is the opportunity for individuals to make and/or submit written or oral comments to the Council on any items within the purview of the Council, which are NOT part of the Agenda. No action on the item may be taken, but the Council may request the matter be placed on a future agenda.

**ALTERATIONS TO CONSENT AGENDA**

(Committee Members can remove or add items to the Consent Agenda.)

**CONSENT AGENDA**

(The Consent Agenda is comprised of items which appear to be non-controversial. Persons wishing to speak on any item may do so by raising their hand to be recognized by the Chair.)

A. Approve Committee meeting minutes of March 5, 2018

**ALTERATIONS TO REGULAR AGENDA**

(Committee Members can remove or add items to the Regular Agenda.)

**REGULAR AGENDA**

(Persons wishing to speak on any item may do so by raising their hand to be recognized by the Chair.)

1. Overview of community services and facilities in Scotts Valley (30 minutes)
2. Review and comment on the Draft Community Services & Facilities Element (70 minutes)
3. Next Steps (10 minutes)

**ADJOURNMENT**      8:00 PM

*The GPAC does not have regular meeting dates, therefore, all meetings are special meetings as defined under the Government Code § 54956 and will be noticed at least 24 hours in advance. Writings that are a public record under Government Code § 54957.5(a), and that relate to an agenda item of a special meeting of the GPAC, shall be available for public inspection at the City of Scotts Valley, 1 Civic Center Drive, Scotts Valley, CA 95066, and also on the General Plan Update website at: [www.scottsvalleygeneralplan.com](http://www.scottsvalleygeneralplan.com)*

The City of Scotts Valley does not discriminate against persons with disabilities. The Committee meeting locations are accessible facilities. If you wish to attend a Committee meeting and require assistance such as sign language, a translator, or other special assistance or devices in order to attend and participate at the meeting, please call the City Clerk's Office at 831-440-5602 five to seven days in advance of the meeting to make arrangements for assistance. If you require the agenda of a Committee meeting be available in an alternative format consistent with a specific disability, please call the City Clerk's Office. The California State Relay Service (TTY/VCO/HCO to Voice: English 1-800-735-2929, Spanish 1-800-855-3000; or, Voice to TTY/VCO/HCO: English 1-800-735-2922, Spanish 1-800-855-3000), provides Telecommunications Devices for the Deaf and Disabled and will provide a link between the TDD caller and users of telephone equipment.





# MINUTES



## Meeting of the General Plan Advisory Committee (GPAC)

Date: March 5, 2018

Time: 6:00 pm

<b>CITY OF SCOTTS VALLEY</b> 1 Civic Center Drive Scotts Valley, CA 95066 (831) 440-5630	<b>MEETING LOCATION</b> City Council Chambers 1 Civic Center Drive Scotts Valley, CA 95066	<b>POSTING:</b> The agenda was posted 3-1-18 at City Hall, SV Senior Center, SV Library and on the Internet at <a href="http://www.scottsvalliegeneralplan.com">www.scottsvalliegeneralplan.com</a>
---	---	--

**CALL TO ORDER** 6:00 p.m.

### ROLL CALL

#### Elected and Appointed Officials:

Present: Jim Reed, Vice Mayor, Scotts Valley City Council  
Derek Timm, Chair, Scotts Valley Planning Commission  
Lori Gentile, Chair, Scotts Valley Parks & Recreation Commission Representative  
Russ Patterson, Director, Scotts Valley Fire Protection District Board of Directors  
Michael Shulman, President, Scotts Valley Unified School District Board of Directors  
Chris Perri, Vice President, Scotts Valley Water District Board of Directors  
Steven Clark, At-Large Member, Appointed by the Scotts Valley City Council  
Angela Franklin, At-Large Member, Appointed by the Scotts Valley City Council  
Jeff Hill, At-Large Alternate Member, Appointed by the Scotts Valley City Council

Absent: Randy Johnson, Mayor, Scotts Valley City Council  
John Yost, President, Scotts Valley Chamber of Commerce Board of Directors  
Ed Harmon, At-Large Member, Appointed by the Scotts Valley City Council

#### City and Support Staff Members:

Present: Jenny Haruyama, City Manager  
Taylor Bateman, Acting Community Development Director  
Brenda Stevens, Assistant Planner  
Bill Wiseman, GPAC Consultant, Kimley-Horn

**PUBLIC COMMENT:** None.

**ALTERATIONS TO CONSENT AGENDA:** None.

## **CONSENT AGENDA:**

- A. Approve Committee meeting minutes of December 11, 2017

***M/S: Clark/Perri***

***To approve the Consent Agenda.***

***Carried 8/0/0/3 (AYES: Reed, Timm, Gentile, Patterson, Shulman, Perri, Clark, and Franklin. Noes: None. Abstain: None. Absent: Johnson, Yost, Harmon.)***

**ALTERATIONS TO REGULAR AGENDA:** None.

## **REGULAR AGENDA**

- 1. Overview of safety and emergency services and operations by Chief Steve Walpole, Scotts Valley Police Department; and Captain Chris Stubendorff, Scotts Valley Fire Protection District.**

Chief Walpole and Captain Stubendorff provided an overview about their respective departments. They discussed how they respond to emergency incidents and their agreements with other emergency service providers. They also answered various questions as raised by the GPAC members.

- 2. Review and comment on the Draft Safety & Noise Element**

The GPAC discussed the Draft Safety and Noise Element. This included a review of the “Background and Context” section and the draft Goals, Policies and Actions.

In addition to suggested edits, it was suggested that a policy and/or action be included to address the need to prepare an updated noise ordinance for inclusion in the Municipal Code.

Written comments were also received from GPAC member Michael Shulman and alternative member Jeff Hill.

All comments and recommendations will be incorporated into the revised draft element.

- 3. Next Steps**

The GPAC discussed potential future meeting dates.

**ADJOURNMENT**      The meeting adjourned at 8:00 p.m.

Approved: \_\_\_\_\_  
Randy Johnson, Chair

Attest: \_\_\_\_\_  
Taylor Bateman, CDD





# COMMUNITY SERVICES & FACILITIES



The Scotts Valley **Community Services & Facilities Element** defines the nature and types of community facilities, services, and activities necessary to maintain a high quality of life in Scotts Valley. The primary goal is to align funding resources with the level of service the community expects. The City also seeks to maintain safety, quality of schools, and other public facilities that are valued by the community.



## COMMUNITY SERVICES & FACILITIES

### Introduction

The Community Services & Facilities element is an optional element per California State law. It addresses community services related to city administration, police and fire protection, water services, wastewater and solid waste management, parks and recreation, public education, and community health.

It provides policy direction and implementation measures to guide future decisions related to these services and associated infrastructure, and to integrate community service concerns into land use decision making. The element is also intended to maintain community services that are available when needed to serve the residents and businesses in the City.

### Current Status

Recommended by Planning Commission to City Council – DATE

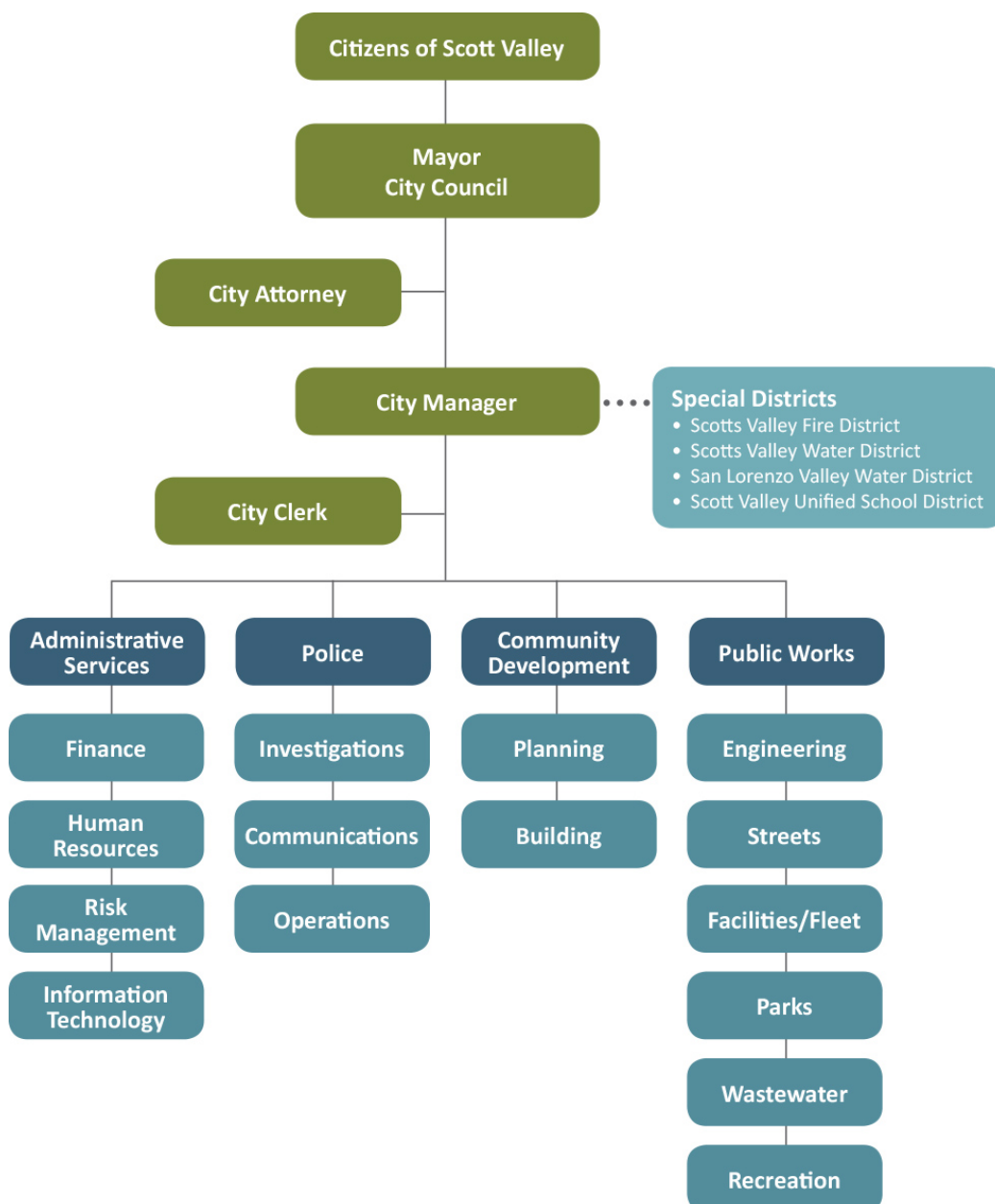
Accepted by City Council at Public Hearing – DATE



## Background and Context

City departments include: Administration; Finance; Police; Planning; Building; and Public Works, which includes Engineering, Street Maintenance, Vehicle Maintenance, Park Maintenance, Building Maintenance, Wastewater, and a Parks & Recreation Division.

The Scotts Valley Water District, a separate special district, provides water services. The Scotts Valley Fire Protection District, also a separate special district, provides fire services. Refuse collection and recycling services are contracted out.





### City of Scotts Valley Community Services & Facilities

Scotts Valley was incorporated as a general law city in 1966. The City operates under the council form of government with legislative responsibility residing with an elected City Council of five members. One City Council member is elected by the others to serve as Mayor.

Administration, Finance, Planning, Building and Police functions are administered from the City Hall building on Civic Center Drive. Public Works/Engineering facilities are in the corporation yard on Lundy Lane.

Below is a summary of the primary City services and facilities. Additional information can be found at [www.scottsvally.org](http://www.scottsvally.org).

#### Police Protection

The major goals of Scotts Valley Police Department (SVPD) are to reduce crime through prevention, detection and apprehension; to provide the orderly and safe movement of vehicular traffic through law enforcement, to provide accident prevention and accident investigation; to ensure public safety through regulation and control of hazardous conditions; to recover and return lost and stolen property and; to provide non-enforcement services through programs reflecting community needs and desires.

SVPD has 20 sworn officers and eight civilian employees. In 2017, the SVPD's Dispatch Center handled more than 3,000 emergency calls and approximately 20,000 non-emergency calls. The average response time to emergency calls in 2017 was two minutes (SVPD, 2018).

The Police Department has both formal and informal assistance agreements with the Santa Cruz County Sheriff's Office and the California Highway Patrol. Assistance may range from immediate help with an emergency problem to large or complicated criminal investigations.

#### Public Works

The Public Works Department includes the Engineering Division, Maintenance Division, Recreation Division, and the Wastewater Division. The City of Scotts Valley does not provide water service, it is provided by the Scotts Valley Water District, San Lorenzo Valley Water District or private wells.

#### Engineering Division

The Engineering Division includes three primary categories: design and construction, traffic engineering, and land development. The design and construction category includes design and implementation of capital improvement projects. Traffic engineering consists of the review of traffic impact studies, traffic movement counts, capacity analyses, and management of traffic signals throughout the City. Land development includes reviewing projects proposed by



perspective land developers and coordinating the review process with other departments such as Planning, Police, and other agencies.

#### Maintenance Division

The Maintenance Division involves street maintenance to include road repair work and striping of public streets within the City, as well as storm drain repair and maintenance; public building maintenance; and City vehicle maintenance. The Maintenance Division also takes care of the City parks; the two largest being Skypark and Siltanen Park. In total, the City has 38.6 acres of developed parks. Facilities include six parks/playgrounds, three soccer fields, four tennis courts, softball and baseball fields, a community center, a senior center, and two childcare facilities on the elementary school campuses.

Additional recreation facilities are provided by the Scotts Valley Unified School District (SVUSD), and the private sector. Public recreation facilities are shown in **Figure CSF 1: Parks and Recreation Facilities**.

#### Recreation Division

Recreation programs are administered by the Recreation Division. The Parks and Recreation Commission, a five-member commission appointed by the City Council, is an advisory Commission that oversees the parks and recreation programs.

The Parks and Recreation Commission has the responsibility of preparing a Parks Master Plan to plan for the acquisition, development and improvement of park facilities in Scotts Valley. The City's Parks Master Plan (adopted March 1996) indicates the need for five acres of developed parks per thousand (1,000) persons. This does not include undeveloped open space and natural resource areas.

With a current population of nearly 12,000, the City has just over three acres of developed park land per thousand persons.

#### Wastewater Division

The City's sanitary sewer collection system is made up of approximately 45 miles of gravity pipelines, seven lift stations, and eight miles of force main. Wastewater is eventually conveyed to the City's Water Reclamation Facility (WRF) on Lundy Lane. It provides residents with wastewater treatment services and recycled water for landscape irrigation and other potential uses.

The WRF was constructed in 1964 as a 30,000 gallon/day package wastewater treatment plant to provide secondary level wastewater treatment. In 1972, an activated sludge treatment system was added and plant capacity expanded to 120,000 gallons/day. Over the years, plant



capacity has been expanded several times to serve growth in the community and has the capacity to treat 1.5 million gallons each day, enough to see the City through planned build-out.

Recent plant upgrades include treatment facility that. In 2001, the City received a permit from the Regional Water Quality Control Board to produce recycled water for unrestricted irrigation use. The tertiary treatment facility currently (2018) treats up to one million gallons per day of recycled water which is used mainly for irrigation at local parks, schools, residences, landscape medians, and businesses. Following disinfection, the tertiary treated water meets State Title 22 standards for water reuse in California and is safe for all permitted uses.

City of Scotts Valley has partnered up with the Scotts Valley Water District, which is the permitted distributor of the recycled water produced at the tertiary treatment facility. An average monthly recycled water demand ranges between 0.8 million gallons in January to 9.4 million gallons in July. 2014 to 2017 annual demand has been fairly stable at approximately 60 million gallons.

### Other Community Service and Facility Providers

#### Fire Protection

As shown in [Figure CSF-2: Fire Districts](#), the Scotts Valley Fire District (SVFD) provides all risk emergency response to a variety of incidents including fires, medical calls, hazardous materials incidents, rescues, and vehicle accidents for both the City of Scotts Valley and the surrounding unincorporated areas. SVFD is an autonomous special district, with funding generated from the area's property taxes. SVFD serves approximately 22,000 people in a 22-square-mile area. The SVFD boundaries run to Highway 17 at Highway 1 to the south, just beyond Laurel Road along upper Highway 17 to the north, Graham Hill Road through Henry Cowell, down to the City of Santa Cruz to the west, and along the Glen Canyon, Granite Creek, and Vine Hill Road areas to the East. The City of Scotts Valley lies within the district boundaries and represents 4.5 square miles of the total area served and approximately 60 percent of the SVFD's service area population.

SVFD has mutual aid agreements with numerous regional fire districts, including the Santa Cruz City Fire Department, Central Fire Protection District, Aptos/La Selva Fire Protection District, Felton Fire Protection District, Zayante Fire Department, and Cal Fire. The District currently manages and provides administrative oversight for the adjoining Branciforte Fire District.

SVFD operates two fire stations (both within the Scotts Valley city limits) and has 24-line firefighting personnel. Station One (headquarters), is located at 7 Erba Lane, and Station Two is located at 251 Glenwood Drive. The District has 27 full-time employees which include line firefighters and the administrative staff. The District also employs two part-time secretaries



and 10 paid call firefighters which are used to supplement the Fire District's regular career firefighters on emergency incidents and in community service activities.

SVFD provides fire prevention services related to the enforcement of local and state fire codes, public fire prevention education, and the investigation of the cause and origins of fire. The Fire Prevention Division provides a comprehensive fire/life safety plan review for land development, new building construction, interior remodel projects, fire suppression, and fire alarm systems. In addition, periodic construction inspections are performed to ensure that completed projects conform to both state and local fire safety regulations.

SVFD responded to approximately 2,300 district wide calls in 2017. The majority (more than 55 percent) of these calls were medical emergency calls. SVFD has a cooperative agreement with the Santa Cruz regional 911 dispatch center, also known as NETCOM, for all emergency and non-emergency dispatching. (SVFD, 2018).

Additional information regarding SVFD can be found at [www.scottsvalleyfire.com](http://www.scottsvalleyfire.com).

### Water Services

Water is provided by three sources: the Scotts Valley Water District (SVWD), the San Lorenzo Valley Water District (SLVWD), and private wells. As shown in **Figure CSF-3: Water Districts**, the SVWD and SLVWD service area boundaries extend beyond the City's Planning Area boundaries. These two districts are responsible for providing public water services for residential, institutional and commercial purposes and for fire protection in their respective service areas.

Both the Scotts Valley Water District and the San Lorenzo Valley Water District rely mainly on groundwater in Santa Margarita Groundwater Basin to serve their respective customers.

SVWD has actively managed groundwater in the area since the early 1980s to increase water supply reliability and to protect local water supply sources. In 1983, SVWD instituted a Water Resources Management Plan to monitor and manage water resources, in 1994 the agency formally adopted a Groundwater Management Plan in accordance with AB3030, also known as the Groundwater Management Act under Water Code section 10750.

In 1995, SVWD, SLVWD, Mount Hermon Association, Lompico County Water District, City of Scotts Valley and County of Santa Cruz signed a Memorandum of Understanding forming Santa Margarita Groundwater Basin Advisory Committee that was actively involved in the cooperative groundwater management of the basin until its dissolution and substitution with Santa Margarita Groundwater Agency (SMGWA) in 2017. SMGWA is a Groundwater Sustainability Agency (GSA) that was established as a Joint Powers Authority in response to the 2014 Sustainable Groundwater Management Act (SGMA) that required the formation of local groundwater sustainability agencies (GSAs) that must assess conditions in their local water



basins and adopt groundwater sustainability plans (GSPs). Santa Margarita Groundwater Agency must develop a plan by January 31, 2022 including the following elements: basin description including groundwater levels, groundwater quality, subsidence, information on groundwater-surface water interaction, data on historical and projected water demands and supplies, monitoring and management provisions, and a description of how the plan will affect other plans, including city and county general plans. The plan needs to be submitted and approved by the Department of Water Resources and evaluated every 5 years after its adoption.

Additional information can be found at [www.smgwa.org](http://www.smgwa.org).

In accordance with the California Water Code (CWC), urban water suppliers with 3,000 or more service connections or supplying 3,000 or more acre-feet of water per year are required to prepare an Urban Water Management Plan (UWMP) every five years. The UWMP is a long-range planning tool that guides the actions of the public water suppliers and provides the elected officials, managers and the public with a broad perspective regarding various water supply issues.

Both public agencies, SVWD and SLVWD have updated their respective Urban Water Management Plans most recently in 2015 and the plans are accessible:

<http://www.svwd.org/sites/default/files/documents/reports/UWMPJune2016.pdf>

[http://www.slvwd.com/pdf/SLVWD%202015%20UWMP\\_Final%20Draft.pdf](http://www.slvwd.com/pdf/SLVWD%202015%20UWMP_Final%20Draft.pdf)

#### *Scotts Valley Water District*

The Scotts Valley Water District (SVWD) was formed under County Water District Law in 1961. Its service area includes most of the City of Scotts Valley as well as some unincorporated areas north of the City with the service area of 5.5 square miles. SVWD relies entirely on local groundwater for its potable water supply. Currently surface water is not part of the water supply portfolio, however, supplemental supply planning includes diversification of the supply and supplementing the groundwater with surface water via a conjunctive use with neighboring agencies, as well as utilization of the excess recycled water for future permitted uses.

#### *Potable Water*

SVWD owns and maintains approximately 60 miles of potable water mains, several potable water storage tanks, pump stations, production wells, and water treatment facilities. Additionally, SVWD owns a recycled water distribution system.

As of 2018, the SVWD has six production wells that have a combined capacity of approximately 2,000 gallons per minute (gpm), or 2.87 million gallons per day (mgd), or 3,214 acre feet per



year (afy). Groundwater production by SVWD in WY2017 (October 1, 2016 through September 30, 2017) was 1,242 acre-feet. From the 1970's to the 2000's, groundwater production steadily rose to a peak of 2,077 afy in 2003. Since then, average production has declined by 40% due to water use efficiency measures, and service connection conversions from potable to recycled water.

### *Recycled Water*

Recycled water has been available in Scotts Valley since 2002 and the program has expanded steadily through expansion of pipelines and service connections. The existing (2018) recycled water distribution system is comprised of a storage tank, pump station, approximately 6 miles of recycled water distribution mains, and supplies an annual average of approximately 200 acre feet per year (afy) water.

Additional information can be found at [www.svwd.org](http://www.svwd.org).

### *San Lorenzo Valley Water District*

The San Lorenzo Valley Water District supplies water service to approximately 500 customers in the Pasatiempo Pines and Manana Woods area of Scotts Valley (SLVWD South Zone) from three wells located near the Santa Cruz County Probation Center. These wells have a combined pumping capacity of approximately 700 gallons per minute. Within the Scotts Valley portion of the San Lorenzo Valley Water District there are three major storage facilities with a combined storage capacity of 390,000 gallons, and approximately 4.5-mile transmission and distribution system.

The highest groundwater production in SLVWD South Zone was 447 afy in WY2002, that has dropped to 245 afy in WY2016.

Additional information can be found at [www.slvwd.com](http://www.slvwd.com).

### *Private Wells*

There are several private wells in the Scotts Valley area that provide water for residential, commercial, and industrial uses, including the Valley Gardens Golf Course and several large mobile home parks. The County of Santa Cruz has the responsibility for permitting and registering the private groundwater wells.

### **Scotts Valley Unified School District**

The Scotts Valley Unified School District (SVUSD) operates the public-school system within the City of Scotts Valley. SVUSD administers two elementary schools; Vine Hill Elementary and Brook Knoll Elementary (K-5); Scotts Valley Middle School (6-8), and Scotts Valley High School (9-12).



Total SVUSD school enrollment for elementary and secondary students for the 2016/2017 academic year was 2,505. This roughly equates to 600 students for each elementary school and the middle school, and 800 students for the high school.

SVHS participates in the International Baccalaureate (IB) program – the only one in Santa Cruz County and among only a few within the Monterey Bay area. The IB program is an alternative to the more common advanced placement (AP) program that most high schools provide for their more academically-oriented students seeking college preparation. It draws students from around the county, and serves as a valuable distinguishing feature for Scotts Valley.

Additionally, there are students that reside in the City of Scotts Valley who attend private schools within Scotts Valley. These include Baymonte Christian School, Child's Reflection, Montessori Scotts Valley, and Monterey Coast Preparatory School.

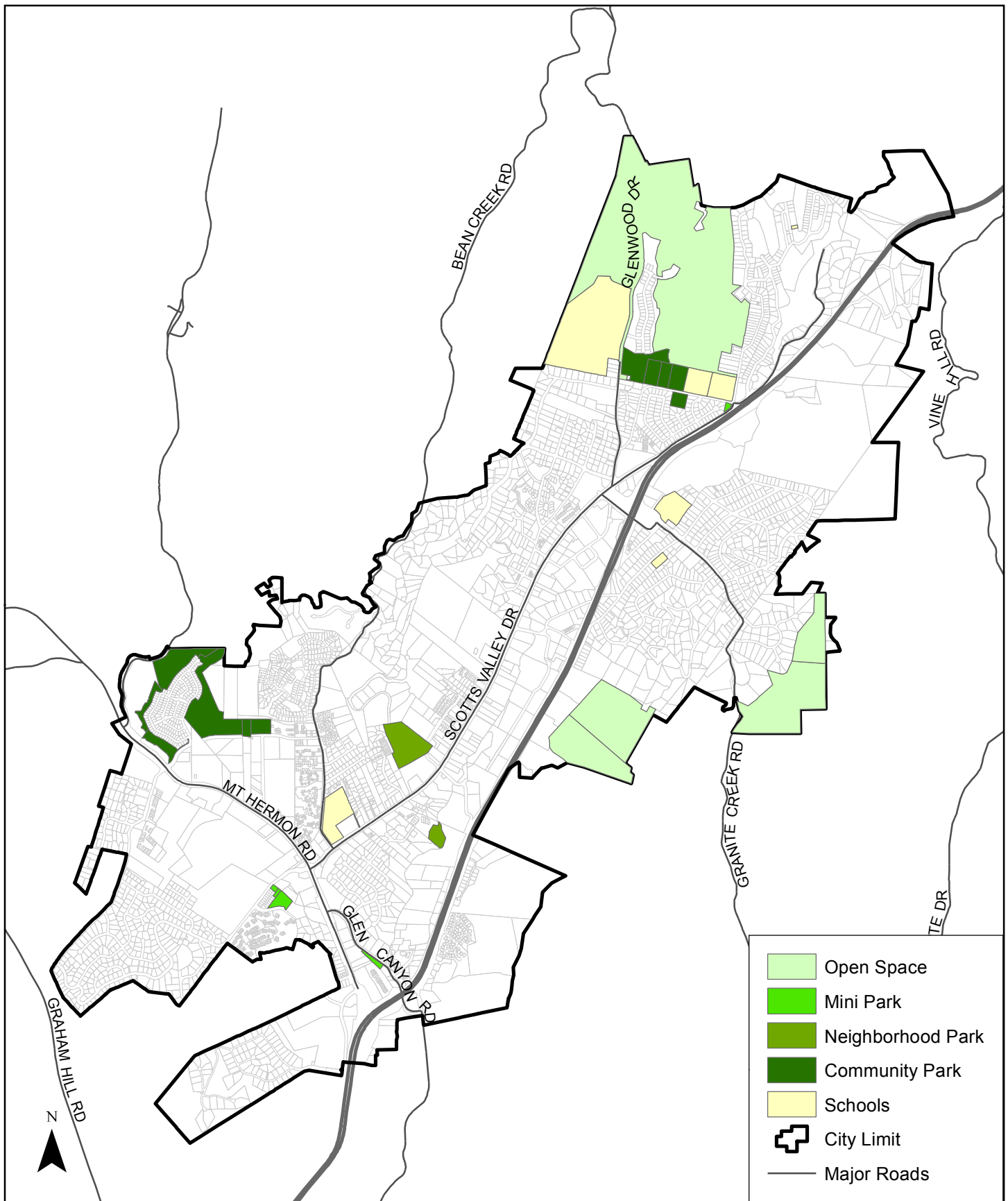
Additional information can be found at [scottsvalley-ca.schoolloop.com](http://scottsvalley-ca.schoolloop.com).

### **Solid Waste Management**

GreenWaste Recovery is the current private contractor providing weekly collection of garbage, recyclable materials, and yard trimmings for residents and businesses in the City of Scotts Valley. Solid waste is transported to either the Buena Vista Sanitary Landfill, which is operated by Santa Cruz County; or the Ben Lomond Transfer Station, where it is then delivered to the Monterey Peninsula Landfill; which is operated by the Monterey Regional Waste Management District.

The Buena Vista Sanitary Landfill, located in Santa Cruz County, is permitted until 2031 and has a maximum capacity of 7,537,700 cubic yards of solid waste, with approximately 3,303,649 cubic yards of remaining capacity. The Buena Vista Sanitary Landfill is permitted to receive 838 tons of solid waste per day. The Monterey Peninsula Landfill, located in Marina, has a maximum capacity of 49,700,000 cubic yards of solid waste, with approximately 48,560,000 cubic yards of remaining capacity. The Monterey Peninsula Landfill is permitted to receive 3,500 tons of solid waste per day (CalRecycle, 2018).



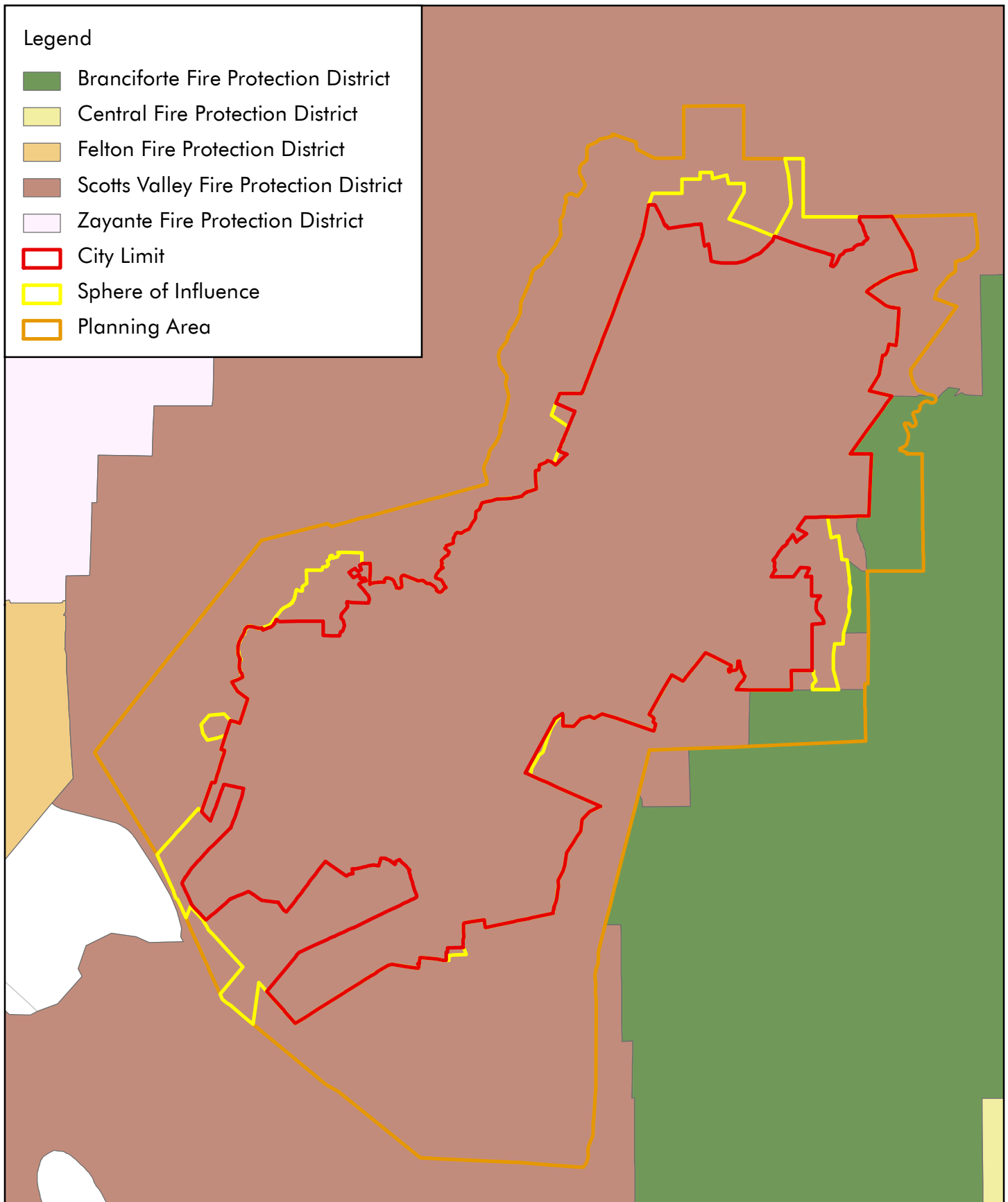


Source: City of Scotts Valley (2013)

## Scotts Valley General Plan Update Parks and Recreation Facilities

Figure x-x



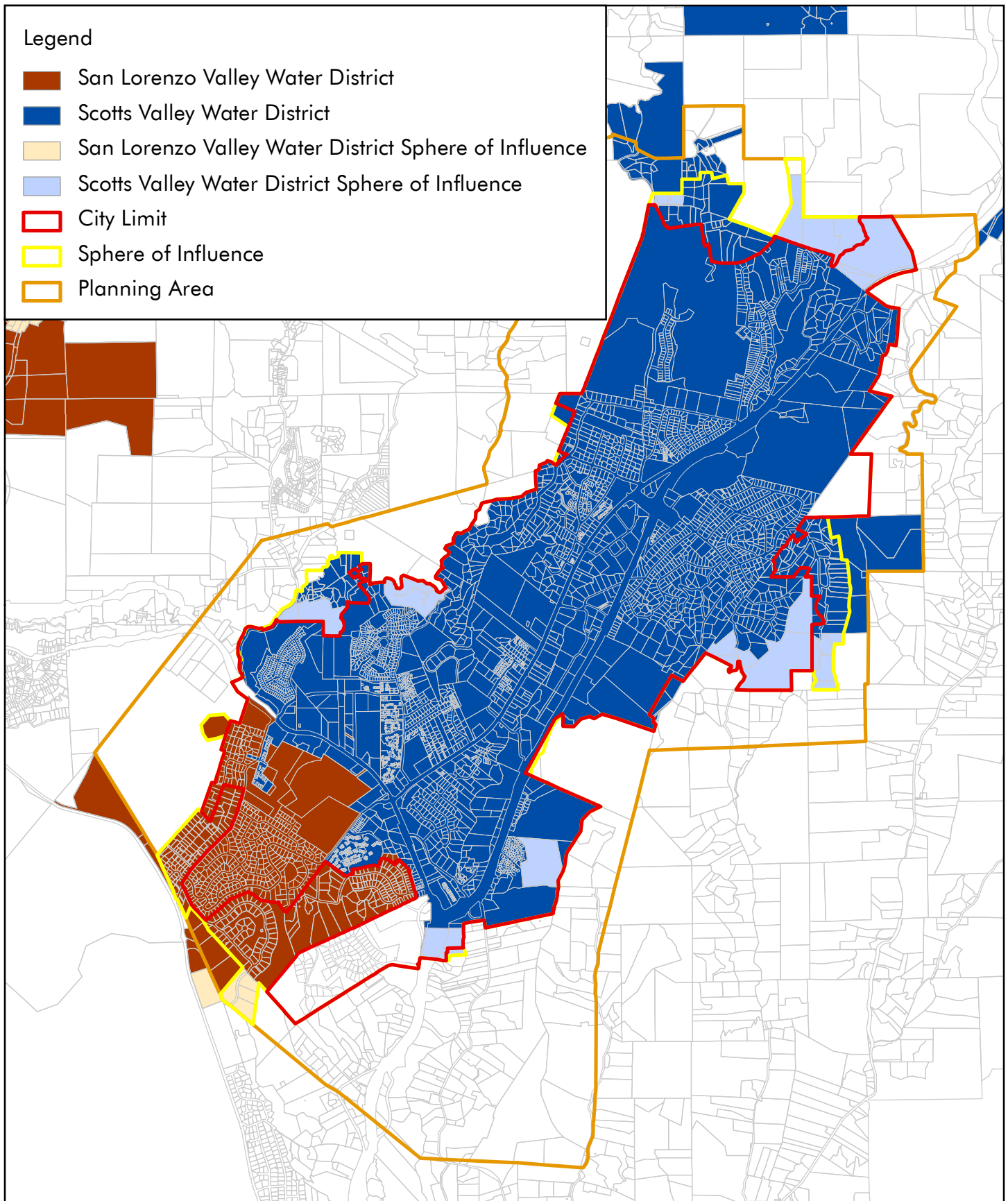


Source: City of Scotts Valley (2013)

Scotts Valley General Plan Update  
**Fire Districts**

Figure x-x





Source: City of Scotts Valley (2013)

Scotts Valley General Plan Update  
**Water Districts**

Figure x-x





## Goals, Policies & Actions

**Goal CSF-1** To provide reliable and cost-effective water, wastewater, and solid waste management services that is sustainably managed.

---

### Policies

---

#### Region

- Policy CSF-1.1**      **Groundwater Management Coordination**  
Support the collaborative efforts by the Scotts Valley Water District, the San Lorenzo Valley Water District, the County of Santa Cruz who are responsible for sustainably managing the Santa Margarita Groundwater Basin.
- Policy CSF-1.2**      **Solid Waste Management Coordination**  
Coordinate with the Santa Cruz County Recycling and Solid Waste Services and other local non-profit agencies to carry out community public health education and waste reduction programs.

#### City

- Policy CSF-1.3**      **Annexation**  
Confirm with the relevant agencies prior to a city-led annexation that adequate water, wastewater and disposal services can be provided for the proposed annexation area.
- Policy CSF-1.4**      **Master Plans**  
Conduct periodic updates to wastewater, and stormwater master plans and require all new development requiring discretionary review to be consistent with the current master plans.
- Policy CSF-1.5**      **Special District Management Plans**  
Work cooperatively with the Scotts Valley Water District and San Lorenzo Valley Water District to update their Urban Water Management Plan and other water management related plans as necessary.

**Policy CSF-1.6****Water Facility Protection**

Work in coordination with the relevant agencies to protect existing and future water, wastewater, and recycled water facilities from encroachment by incompatible land uses that may be allowed through discretionary land use permits or changes in land use or zoning designations.

**Policy CSF-1.7****Waste Diversion Rate**

Support efforts to meet the state's current and future waste diversion goals through City, County and other agency's recycling and diversion programs.

**Policy CSF-1.8****Expanded Materials Recycling**

Encourage increased recycling of materials by commercial, industrial, and residential generators.

**Project****Policy CSF-1.9****New Development**

The City shall not allow existing or new private wells to service new development that requires discretionary review.

**Policy CSF-1.10****Regulatory Compliance**

Monitor the development review process to support compliance with the water efficiency related regulations.

**Policy CSF-1.11****Wastewater Improvements**

Plan for necessary improvements and associated funding to ensure adequate levels of wastewater treatment are available to meet the demand of the service area. (PSA-572)

**Policy CSF-1.12****Development-funded Facilities**

Consider requiring new developments to construct on-site or off-site facilities that benefit larger group of constituents than just the ones served by the new development. In such instances, establish a process by which a future development is to reimburse the original development a proportionate share of the original cost of the facilities to the degree of the benefit received by them.

**Policy CSF-1.13****Stormwater Management**

Require new development to maintain predevelopment runoff levels, consistent with State regulations.



**Policy CSF-1.14**

**Recycled Water**

Support the expansion of recycled water infrastructure throughout Scotts Valley and require new development to connect to recycled water system if appropriate and feasible.

---

Actions

---

**Action CSF-1.1** Pending

**Goal CSF-2** To provide high quality emergency services for Scotts Valley residents, businesses, and visitors.

---

Policies

---

**Region**

**Policy CSF-2.1**

**Interagency Support**

Participate in mutual aid system and automatic aid agreements to back up and supplement capabilities to respond to emergencies.

**Policy CSF-2.2**

**Interagency Communications**

Maintain an effective communication system between emergency service providers within Scotts Valley and neighboring jurisdictions.

**Policy CSF-2.3**

**Regional Crime Prevention**

Participate in multi-jurisdictional crime suppression units with emphasis on career criminal apprehension and reducing the number of victims.

**City**

**Policy CSF-2.4**

**Police Service**

Ensure appropriate police staff, stations, equipment, and training to meet the demands of city residents, employees and visitors.

**Policy CSF-2.5**

**Police Responsiveness**

Update and maintain policy response time standards.



<b>Policy CSF-2.6</b>	<b>Fire Service</b> Support the Scotts Valley Fire District's efforts to maintain staffing, facilities, and training activities to effectively respond to emergency and public service calls.
<b>Policy CSF-2.7</b>	<b>Emergency Preparedness Planning</b> Maintain an emergency operations plan and emergency operations center to prepare for actual or threatened conditions of disaster or extreme peril.
<b>Policy CSF-2.8</b>	<b>Police Response Time</b> The Police Department will strive to maintain a maximum three-minute response time to emergency calls within the City, 24 hours a day.
<b>Policy CSF-2.9</b>	<b>Community-based Program Development</b> The Police Department will proactively promote community involvement and participation to define community needs, confirm priorities, and develop programs, that meet their needs, while also promoting neighborhood crime prevention programs. (PSA-530, revised)
<b>Policy CSF-2.10</b>	<b>Community Outreach</b> Conduct outreach in the community to promote personal and public safety in daily life and in cases of emergency. Regularly update and inform the public on the real levels of crime and safety to strengthen their perceived sense of personal security.
<b>Policy CSF-2.11</b>	<b>Drug Prevention for Youth</b> Work with the Scotts Valley School District and private schools to provide drug prevention education and awareness.
<b>Project</b>	
<b>Policy CSF-2.12</b>	<b>Plan Review</b> All new development shall be referred to the Police Department for law and Scotts Valley Fire District for plan review evaluation of fire and life safety issues. (PSP-533, revised)
<b>Policy CSF-2.13</b>	<b>Safety and Crime Prevention Through Design</b> Seek ways to reduce police service demands through land use planning and project design.



**Policy CSF-2.14**

**Community Wildfire Protection Planning**

Require new development in areas susceptible to wildfires to be responsible for fire prevention activities (e.g., visible house numbering and use of fire-resistant and fire-retardant building and landscape materials) and to provide a defensible zone to inhibit the spread of wildfires.

---

Actions

---

**Action CSF-2.1**

**Emergency Services Budgeting**

During the annual budget review, assess the present and future requirements of the Police Department and allocate a budget commensurate with the City's needs. (PSA-526)



**Goal CSF-3** To provide ample, safe, and well-maintained park and recreation facilities and programs that serve the needs of the community

## Policies

### Region

- Policy CSF-3.1**      **Multiuse Trail Network**  
Work in coordination with other state and local organizations in the development of a regionally integrated, multiuse trail network as identified in the City's Parks Master Plan. (PRA-629 and 630, combined and modified)
- Policy CSF-3.2**      **Connected Trails**  
Where appropriate, trails shall connect with parks and recreational areas. (PRA-631)

### City

- Policy CSF-3.3**      **Park Planning**  
Plan parks and recreation facilities adequate for the City's recreational needs, activities, and programs, commensurate with projected population growth. (PRO-603, and PRA-606 combined)
- Policy CSF-3.4**      **Locating Park and Recreation Areas**  
Locate and design park and recreation areas to provide for ease of access by pedestrians, bicyclists, and equestrians. (PRA-621)
- Policy CSF-3.5**      **Mobility Access to Park and Recreation Facilities**  
As a part of the City's open space/park and recreation implementation plan, incorporate trails, paths, sidewalks, and bicycle lanes to provide ease of access to and in the identified park and recreation areas. (PRA-622)
- Policy CSF-3.6**      **Park Concessions**  
Plan for the expansion of concessions in parks and recreation facilities.
- Policy CSF-3.7**      **Preventative Maintenance**  
Fund and staff regularly scheduled preventative maintenance of all recreation facilities. (PRA-609, modified)



- Policy CSF-3.8**      **Coordination with Schools**  
Coordinate with local schools to expand parks and recreation opportunities for the community through joint use agreements; co-development, expanding, and refurbishing; and other collaborative efforts.
- Policy CSF-3.9**      **Small Park Opportunity Sites**  
Evaluate all lands, regardless of size, for their potential development as small parks, community gardens, landscape lots, etc.
- Policy CSF-3.10**      **Ongoing Maintenance**  
Ensure that ongoing maintenance needs are addressed in the development and funding plans for any new or expanded parks, recreation facilities, and open space.
- Policy CSF-3.11**      **Recreation Programs**  
Provide adequate recreation programs that serve the needs of all members of the community including youth, seniors, and disable persons. (PRG-647, modified)
- Policy CSF-3.12**      **Parkland and in-Kind Contributions**  
The Parks and Recreation Commission shall advise the City Council regarding the acceptance or rejection of offers of donations of money, personal and/or real property to the City for recreational and park purposes and use and make recommendations where appropriate. (PRA-656)
- Policy CSF-3.13**      **Sale or Purchase of Parkland**  
The City Council shall solicit the recommendation of the Parks and Recreation Commission regarding the sale or purchases of lands for park and recreation purposes. (PRA-657)
- Policy CSF-3.14**      **Recreation Fees and Budgets**  
The City Council shall refer proposed changes to the Recreation Division's fee schedule and Parks and Recreation Division 's budgets to the Parks and Recreation Commission for its recommendation prior to City Council action. (PRA-655)

**Policy CSF-3.15****Volunteer Support & Private Funding**

Volunteer efforts and private financial resources should be promoted and used in combination with public funds for enhancement, acquisition, maintenance and operation of park and recreation facilities. The Parks and Recreation Commission and/or park specialist should solicit volunteer efforts and private financial resources. (PRA-615)

**Neighborhood****Policy CSF-3.16****Access to the Lodato Park Trail System**

The City shall work with property owners towards obtaining increased and ultimately full-time access to the trail system of Lodato Park. (PRA-624)

**Project****Policy CSF-3.17****Provision of Park Land and Facilities**

Condition new development requiring discretionary review to provide for the orderly completion of the City's comprehensive park system, including bicycle paths and hiking and equestrian trails. (PRA-608, modified)

**Policy CSF-3.18****Dedication of Trail Easements**

The City shall require public dedication of trail easements and bike paths in new projects located along adopted routes. (PRP-634)

**Policy CSF-3.19****Construction of Trails and Bike Paths**

For new development requiring discretionary review, the City may require where appropriate, the dedication and construction of trails and bike paths consistent with the General Plan policies as part of project approval. (PRA-635, modified)

**Policy CSF-3.20****Minimizing Trail Impacts**

When siting and designing new trails, seek to minimize impacts to sensitive biological and scenic resources. (PRP-645 and -646, modified)

**Policy CSF-3.21****Public Safety**

Promote public safety in planning, design, construction, and use of all recreation facilities. (PRP-637, modified)

**Policy CSF-3.22****Parkland Siting**

Locate and design park and recreation areas to provide for ease of access by pedestrians, bicyclists, and, where feasible, transit and equestrian.



- Policy CSF-3.23      Land Use Compatibility**  
Park and recreation areas should be planned, developed, and used in a manner which is compatible with adjacent land uses. (PRA-619)
- Policy CSF-3.24      Recreation for New Development**  
Ensure that adequate park land is provided in conjunction with new residential development, concurrent with the City's parks, recreation and open space, land and facilities tax.
- Policy CSF-3.25      Commercial and Industrial Development**  
All commercial and industrial developments shall provide recreational facilities on-site or contribute money to enhance the City's park and recreation system. (PRA-617)

---

## Actions

---

- Action CSF-3.1      Parks Master Plan**  
Maintain a citywide Parks Master Plan that sets service standards and strategic goals for the development and maintenance of parks and related facilities.
- Action CSF-3.2      Park Grant Funding**  
Continue to solicit state open space, park and recreation, and access grants to acquire park land and/or to expand and develop the City's existing park facilities.
- Action CSF-3.3      Commercial and Industrial Recreation Provisions**  
Amend City Code to require commercial and industrial development to provide open space/recreation facilities within the project. In the alternative, require dedication of land or in-lieu fees for park and recreation amenities. (PRA-612)
- Action CSF-3.4      Park Programming Assessment**  
Periodically reassess the changing needs of the community for recreation programs.
- Action CSF-3.5      Park Design**  
The Parks and Recreation Commission shall develop specific designs for the park sites identified in the Parks Master Plan. These designs should provide

recreation opportunities and facilities to meet the needs of various target groups: youth, adults and seniors, with emphasis on lifetime sports and activities for the expanding adult population.

**Goal CSF-4** To provide great schools and high quality educational and training facilities and programs that define Scotts Valley as the preeminent community for families and a skilled workforce.

## Policies

### Region

**Policy CSF-4.1** **Educational Partners**  
Partner with educational institutions throughout the region to expand the range and quality of educational offerings available to the community.

### City

**Policy CSF-4.2** **Academic Excellence**  
Advocate for the continued pursuit of academic excellence in schools serving the Scotts Valley community.

**Policy CSF-4.3** **Adequate School Facilities**  
Encourage communication and cooperation between the City, applicants for residential development projects, and appropriate educational districts and agencies to ensure that adequate, safe school facilities and services are planned to provide a quality educational environment for anticipated growth. (PSO-540, revised)

**Policy CSF-4.4** **School Access**  
Coordinate with the school districts to improve access to school facilities that maximize access, walkability, and safety, while minimizing impacts to surrounding neighborhoods. Implement the Safe Routes to School program where funded. Re-stripe streets for school zone safety as needed.



**Policy CSF-4.5**

**Joint Use of Facilities**

Continue to encourage school administrations to enable non-school hour use of their facilities by the public for educational and recreational purposes. (PSP-546, modified)

**Policy CSF-4.6**

**Workforce Training**

Collaborate with industrial organizations, businesses, and educational institutions to create opportunities for workforce training.

**Policy CSF-4.7**

**Youth Programs**

Work with public and private school administrators to promote or sponsor teen activities such as dances, job fairs, special classes geared to teen interests and issues, and volunteer programs for youth. Develop programs that promote youth leadership, empowerment, self-esteem, and an understanding, appreciation, and respect for cultural diversity.

**Project**

**Policy CSF-4.8**

**Project Review Adjacent to School Property**

The Planning Department shall submit any General Plan amendment, rezoning, or project development proposals for properties adjacent to existing or future school sites to the appropriate school district for review and comment prior to preparation of the City staff report. (PSA-556)




---

## Actions

---

**Goal CSF-5** To provide comprehensive community facilities and programs that connect members of all ages and abilities to a broad range of cultural, informational, and recreational resources.

---

## Policies

---

### City

#### Policy CSF-5.1

##### **Cultural Facilities**

Encourage the establishment of a broad range of facilities and events that expose Scott Valley residents to a variety of cultures, the arts, history, and technology.

#### Policy CSF-5.2

##### **Library Services**

Assure that basic library services are provided free of charge.

#### Policy CSF-5.3

##### **Libraries and Community Centers**

Support any improvements and programs associated with libraries and community centers as focal points for community engagement and information for residents of all ages and abilities.

#### Policy CSF-5.4

##### **Lifelong Learning**

Enhance and expand Scotts Valley's library facilities to meet the evolving educational and lifelong learning needs of the community. Coordinate with local educational institutions to offer courses and learning opportunities outside the classroom.

#### Policy CSF-5.5

##### **Recreation Programs**

Provide and/or sponsor recreational programs and services that are accessible and affordable to residents of all ages and abilities and encourage active and healthy living.

#### Policy CSF-5.6

**Access to Community Facilities.** Support the improvement of transit connections to community facilities for people who are transit-dependent.



---

## Actions

---

- Action CSF-5.1 Youth Programs**  
Coordinate with public and private schools, local nonprofits, service clubs, and other agencies to provide opportunities for youth to explore and enjoy sports, creative and performing arts, future career paths, civic activities, and volunteer opportunities.
- Action CSF-5.2 Senior Programs**  
Collaborate with service providers to provide a wide variety of senior services and programs, including daily opportunities for seniors to have physical activity, social interaction, and mental stimulation.
- Action CSF-5.3 Childcare and Childhood Development**  
Encourage efforts to expand the overall capacity of and access to local childcare and early childhood development centers.

**Goal CSF-6** Seek to create a community that promotes a physical, social, and business environment that improves the health and well-being of its citizens.

---

## Policies

---

### Regional

- Policy CSF-6.1 Multiagency Coordination**  
Coordinate the activities and communications between code enforcement, fire, police, and public health agencies in the City of Scotts Valley and Santa Cruz County to proactively identify and ameliorate hazardous building and living conditions that create chronic health problems.

## City

<b>Policy CSF-6.2</b>	<b>Community Education</b> Provide and/or support the provision of campaigns that motivate healthy lifestyles and teach residents about the benefits of physical activity and healthy eating habits. Emphasize abuse prevention education for children in coordination with schools and the fire department.
<b>Policy CSF-6.3</b>	<b>Healthy and Local Food Venues</b> Encourage stores and restaurants to offer and promote healthy food options, with a focus on underserved areas and areas near schools. Support incentives that encourage the development of retail venues that sell local, fresh produce. Actively support and provide space for a farmer(s) market.
<b>Policy CSF-6.4</b>	<b>Restrict Unhealthy Options</b> Discourage new liquor and tobacco stores and fast food restaurants near schools, neighborhoods, and in areas with an existing high concentration of such stores.
<b>Policy CSF-6.5</b>	<b>Health and Social Services</b> Support the permitting of sites for and services from organizations providing a broad range of health, prevention, and treatment services that reach individuals and families commensurate with the needs in Scotts Valley.
<b>Policy CSF-6.6</b>	<b>Healthy Workplace</b> Encourage building design and employee programs and policies that maintain and improve the health, well-being, and productivity of employees.
<b>Policy CSF-6.7</b>	<b>Access to Medical Facilities</b> Work with healthcare providers to improve transit connections to local and regional healthcare facilities for people who are transit dependent.

---

## Actions

---

<b>Action CSF-6.1</b>	<b>XXX</b>
	<b>XXXX</b>